

CM 420 Offshore

EASY TO USE

LIGHTWEIGHT

MARINE ENVIRONMENT

PUMPABLE

CM 420 Offshore is a pumpable self-levelling underlayment intended for substrates of steel or sheet metal on ships, ferries, oil drilling platforms, etc.

June 27, 2019

Area of use

Recommended application thickness is 3–30 mm.

Pre-treatment

The substrate should be clean and free of dust, cement skin, grease and other impurities that can prevent adhesion. Adhesion and surface resistance of the substrate should be no less than 0.5 MPa. Always prime the underlying substrate with PP600 and allow to dry before pouring. In terms of the primer forming a film, the temperature of the substrate must not fall below 10 °C. For best results, the ambient temperature in the work area should be between 10 and 25 °C.

Mixing

Mix CM 420 Offshore with max 4.3 liters of water (max 29 %) per 15 kg bag. Create the mixture with a drilling machine and a whisk, or a mixing pump intended for this purpose. The correct water mixture can be tested using a slump test with a cylinder with Ø 30 mm and a height of 50 mm on a 300 x 300 mm plexiglas plate. With the correct water mixture, the spread should be max 145 mm. The slump test also checks that the material is well blended and that there is no separation.

Application

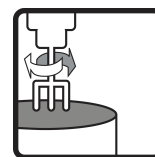
The mixed material is applied by hand, or pumped out onto the substrate in lengths and leveled with a toothed smoother. Each new ribbon is added to the old one as soon as possible so that the material can blend together and create an even surface. The width of the ribbons can be adjusted to the capacity of the mixing pump and the thickness of the covering. Use the Combimix form foam for edging. In order to avoid drainage pipes from getting clogged, always make sure the drains are properly sealed before pouring.

Post-treatment and curing

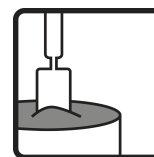
You can easily shape or cut the semi-hardened self-leveling underlayment material before it fully dries. Always make sure that the material is sufficiently dry before installing flooring. The drying time is 1–3 days for the product to be carpetable. The guiding value assumes a curing



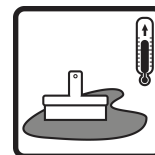
Water requirements
4,3 l/15 kg



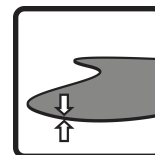
Mixing time
3 min



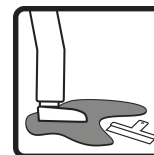
Working time
approx. 60 min



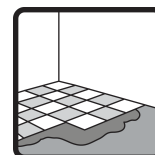
Workplace temperature
10–25 °C



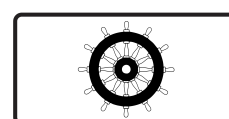
Thickness
3–30 mm



Final set
> 4 hrs



Coverable (tiles)
24 hrs



Combimix®

CM 420 Offshore

EASY TO USE

LIGHTWEIGHT

MARINE ENVIRONMENT

PUMPABLE

CM 420 Offshore is a pumpable self-levelling underlayment intended for substrates of steel or sheet metal on ships, ferries, oil drilling platforms, etc.

June 27, 2019

temperature of approximately 20 °C, 40 % RH and proper air flow.

Storage time and packaging

Six months in dry areas. CM 420 Offshore is delivered in 15 kg bags, in super sacks and in bulk.

Residual products and safety information

Empty bags can be burned. Any remaining, dry powder that has been stored properly can be used again. Hardened material should be disposed of as construction waste. Do not wash the product into the sewage system. The cement in the product has a reduced level of chromate

Health, environment, safety and technical service documents

Current version of product information is available at www.marine.com-bimix.com. Previously undated and dated issues are no longer valid. For more information contact our sales organization.

This product sheet contains general information. Products can be used in a number of changing conditions and situations. Combimix is not responsible for the storage, use in construction, processing or design, interactions with other products, required use due to local conditions or other external factors. Combimix is also not responsible for cases where the above information has been misinterpreted or neglected by the user.



CM 420 Offshore

EASY TO USE

LIGHTWEIGHT

MARINE ENVIRONMENT

PUMPABLE

CM 420 Offshore is a pumpable self-levelling underlayment intended for substrates of steel or sheet metal on ships, ferries, oil drilling platforms, etc.

June 27, 2019

Produktspecifikation

| | |
|---|--|
| Release of corrosive substances | CT (as per Marine directive 96/98/EC) |
| Compressive strength class | C20 (as per Marine directive 96/98/EC) |
| Compressive strength average | 35 MPa (as per Marine directive 96/98/EC) |
| Flexural strength class | F4 (as per Marine directive 96/98/EC) |
| Flexural strength average | 10 MPa (as per Marine directive 96/98/EC) |
| Fire resistance class | A2fl-s1 (as per Marine directive 96/98/EC) |
| RWA | 100 (as per Marine directive 96/98/EC) |
| RWFC | 550 (as per Marine directive 96/98/EC) |
| Adhesion to surface | > 1,5 MPa (as per Marine directive 96/98/EC) |
| Thickness | 3–30 mm |
| Grain size | < 0.5 mm |
| Material consumption | 1.1 kg/m ² /mm |
| Weight (dry state) | 1100 kg/m ³ |
| Water requirements | 4,3 l/15 kg |
| Flow rate | max 145 mm |
| Workplace temperature | 10–25 °C |
| Mixing time | 3 min |
| Working time | approx. 60 min |
| Final set | > 4 hrs |
| Coverable (tiles) | 24 hrs |
| Carpetable | 1–3 days |
| pH | approx. 11 |
| Water damage resistant | yes |
| Surface Tensile Bond Strength, 28 days (sanded, loaded surface) | > 1,5 MPa |
| Shrinkage | 0.04–0.06 % |
| TVOC 28 days | 30 µg/m ² h |

