

# CM 740 Fast Fine

FINE

PUMPABLE

FAST-DRYING

CM 740 Fast Fine is a pumpable, quick-drying self-levelling underlayment.

June 27, 2019

## Area of use

The product is quick setting, selfdrying and has a very good flow rate. The CM 740 is suitable for new construction and renovation. The product is intended for indoor use on substrates of concrete, lightweight concrete, stone, ceramic tiles, gypsum underlay, wood and homogenous PVC.

## Pre-treatment

The substrate should be clean and free of dust, cement skin, grease and other impurities that can prevent adhesion. Adhesion and surface strength of the substrate should be no less than 0.5 MPa. Always prime the underlying substrate with PP 600 and allow to dry before pouring. In terms of the primer forming a film, the temperature of the substrate must not fall below 10 °C. For best results, the ambient temperature in the work area should be between 10 and 25 °C. At higher or lower temperatures, the time for curing will shorten or extend. With the risk for cracks due to shrinkage or settings in the subfloor, a concrete surface should not be leveled within the first 28 days after casting. As a recommendation the RH in the concrete should have reached RH 90 % as the upper limit for pouring the CM 740. Use the Combimix form foam for edging. In order to avoid drainage pipes from getting clogged, always make sure the drains are properly sealed before pouring.

## Mixing

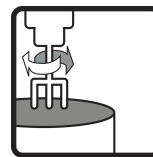
Mix the dry powder with max 4.2 liters of water (max 21 %) per 20 kg bag. Mix with a drilling machine and a whisk, or a mixing pump intended for this purpose. The correct water mixture can be tested using a slump test with a cylinder with Ø 30 mm and a height of 50 mm on 300 x 300 mm plexiglas plate. With the correct water mixture, the spread should be max 145 mm. The slump test also checks that the material is well blended and that there is no separation.

## Application

The mixed material is applied by hand, or pumped out onto the substrate in lengths. Each new ribbon is added to the old one as soon as possible so that the material can blend together and create an even



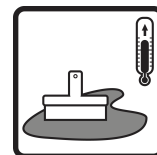
Water requirements  
4,2 l/20 kg



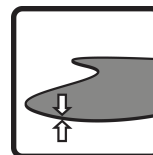
Mixing time  
3 min



Working time  
10–25 min



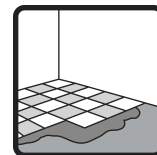
Workplace temperature  
10–25 °C



Thickness  
3–30 mm



Final set  
1–3 hrs



Coverable (tiles)  
12 hrs



**Combimix®**

# CM 740 Fast Fine

FINE

PUMPABLE

FAST-DRYING

CM 740 Fast Fine is a pumpable, quick-drying self-levelling underlayment.

June 27, 2019

surface. The width of the ribbons can be adjusted to the capacity of the mixing pump and the thickness of the covering. The material requires a light treatment with a toothed trowel to provide maximum smoothness.

## Post-treatment and curing

You can easily shape or cut the semi hardened self-leveling underlayment material before it fully dries. Always make sure that the material is sufficiently dry before it will be covered by a carpet or a foilsystem. The CM 740 may be covered by a carpet or a foilsystem after 12–24 hours depending on the thickness. The guiding value assumes a curing temperature of approximately 20 °C, 40 % RH and proper air flow.

## Storage time and packaging

Store in a dry environment, on an unopened plastic-coated pallet, six months from the date of production. The date of production is printed on the packaging. May be used after 6 months but properties such as flow rate, hardening and drying times will be extended. CM 740 Fast Fine is delivered in 20 kg bags and in big bags.

## Residual products and safety information

Empty bags can be burned. Any remaining, dry powder that has been stored properly can be used again. Hardened material should be disposed of as construction waste. Do not wash the product into the sewage system. The cement in the product has a reduced level of chromate. Follow regulations in each respective country.

## Health, environment, safety and technical service documents

For current version of product information, contact Combimix at [info@combimix.se](mailto:info@combimix.se). Previously undated and dated issues are no longer valid. For more information contact our sales organization.

This product sheet contains general information. Products can be used in a number of changing conditions and situations. Combimix is not responsible for the storage, use in construction, processing or design, interactions with other products, required use due to local conditions or other external factors. Combimix is also not responsible for cases where the above information has been misinterpreted or neglected by the user.



# CM 740 Fast Fine

FINE

PUMPABLE

FAST-DRYING

CM 740 Fast Fine is a pumpable, quick-drying self-levelling underlayment.

June 27, 2019

## Produktspecifikation

Release of corrosive substances	CT (as per EN 13813)
Compressive strength class	C30 (as per EN 13813)
Compressive strength average	35 MPa (as per EN 13813)
Flexural strength class	F7 (as per EN 13813)
Flexural strength average	8 MPa (as per EN 13813)
Fire resistance class	A1fl (as per EN 13813)
RWFC	550 (as per EN 13813)
Adhesion to surface	B1,5 (as per EN 13813)
Thickness	3–30 mm
Thickness	6–10 mm on lightweight concrete
Grain size	< 1 mm
Material consumption	1.6 kg/m <sup>2</sup> /mm
Weight (dry state)	1600 kg/m <sup>3</sup>
Water requirements	4,2 l/20 kg
Flow rate	max 145 mm
Workplace temperature	10–25 °C
Mixing time	3 min
Working time	10–25 min
Final set	1–3 hrs
Coverable (tiles)	12 hrs
Carpetable	12–24 hrs
pH	approx. 11
Water damage resistant	yes
Surface Tensile Bond Strength, 28 days (sanded, loaded surface)	> 1.5 MPa
Shrinkage	0.03–0.05 %
TVOC 28 days	30 µg/(m <sup>2</sup> h)

