

CM 840 Fine

FINE

HAND APPLICATION

FAST-DRYING

CM 840 is a multipurpose trowelable patching compound for underlayments.

June 27, 2019

Area of use

CM 840 is a multipurpose trowelable patching compound for underlayments. CM 840 can be installed on all types of concrete, well-bonded gypsum, bonded ceramic tile, quarry tile, Vinyl (non-cushion backed), VAT, VCT and PVC. Use Primer to block contact with gypsum-based surfaces. CM 840 is perfect for repairing cracks or creating slopes to drains. It may also be used on walls for repairs.

Pre-treatment

The substrate should be clean and free of dust, cement skin, grease and other impurities that may prevent adhesion. Adhesion and surface resistance of the substrate should be no less than 0,5 MPa. Always prime the substrate with PP 600 and allow to dry before pouring (see PP 600 datasheet for proper dilution and installation directions). In terms of the primer forming a film, the temperature of the substrate must not be below 10 °C. For best results, the ambient temperature in the work area should be between 10-25 °C. At higher or lower temperatures, the time for curing will shorten or extend. Protect the product from excessive heat, excessive cold and draft conditions during and after the installation. It is recommended that the installation should be done with a proper air ventilation from an HVAC system. With the risk for cracks due to shrinkage or settings in the subfloor, a concrete surface should not be leveled within the first 28 days after casting. As a recommendation the RH in the concrete should have reached RH 90 % as the upper limit for applying the CM 840.

Mixing

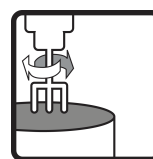
Mix the dry powder with max 4.2 L of cold, potable water, max 28 %, per 15 kg bag. Do not overwater. Mix for 2 minutes with a heavy duty drill mixer (650 minimum rpm) to obtain a lump-free mix. Let the mixed CM 840 rest for 1 minute and then mix it for 1 minute again. Product may be refreshed by re-mixing but do not add more water.

Application

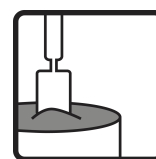
Apply blended material onto substrate at a thickness of 0–50 mm for all surfaces by using a steel trowel. After initial set of material (approx. 10–15 min.), remove any overlap marks, seams and inconsistencies



Water requirements
4,2 l/15 kg



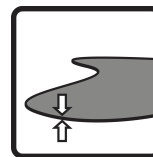
Mixing time
2+1 min



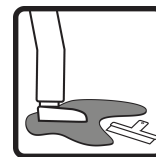
Working time
20–30 min



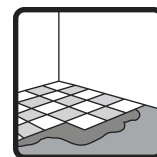
Workplace temperature
10–25 °C



Thickness
0–50 mm



Final set
30–60 min



Coverable (tiles)
1 hr



CM 840 Fine

FINE

HAND APPLICATION

FAST-DRYING

CM 840 is a multipurpose trowelable patching compound for underlayments.

June 27, 2019

by scraping with a steel trowel.

Post-treatment and curing

Protect CM 840 from excessive heat or draft conditions during the curing process. Protect for up to 24 hours after completed installation. Material can be walked on after 30–45 minutes. Before covered by carpet be sure that the subfloor is dry enough. CM 840 is coverable after 1–3 hours. The guiding value assumes a curing temperature of approximately 20 °C, 40 % RH and proper air flow.

Storage time and packaging

Store in a dry environment, on an unopened plastic-coated pallet, six months from the date of production. The date of production is printed on the packaging. CM 840 is delivered in 15 kg bags.

Residual products and safety information

Empty bags can be burned. Any remaining, dry powder that has been stored properly can be used again. Hardened material should be disposed of as construction waste. Do not wash the product into the sewage system. The cement in the product has a reduced level of chromate. Follow regulations in each respective country.

Health, environment, safety and technical service documents

For current version of product information, see www.combimix.com. Previously undated and dated issues are no longer valid. For more information contact our sales organization.

This product sheet contains general information. Products can be used in a number of changing conditions and situations. Combimix is not responsible for the storage, use in construction, processing or design, interactions with other products, required use due to local conditions or other external factors. Combimix is also not responsible for cases where the above information has been misinterpreted or neglected by the user.



CM 840 Fine

FINE

HAND APPLICATION

FAST-DRYING

CM 840 is a multipurpose trowelable patching compound for underlayments.

June 27, 2019

Produktspecifikation

Release of corrosive substances	CT (as per EN 13813)
Compressive strength class	C25 (as per EN 13813)
Compressive strength average	32 MPa (as per EN 13813)
Flexural strength class	F7 (as per EN 13813)
Flexural strength average	7 MPa (as per EN 13813)
Fire resistance class	A1 (as per EN 13813)
Adhesion to surface	> 1 MPa (as per EN 13813)
Thickness	0–50 mm
Thickness	6–20 mm
Grain size	< 0.5 mm
Material consumption	1.7 kg/m ² /mm
Weight (dry state)	1700 kg/m ³
Water requirements	4,2 l/15 kg
Workplace temperature	10–25 °C
Mixing time	2+1 min
Working time	20–30 min
Final set	30–60 min
Coverable (tiles)	1 hr
Carpetable	1–3 hrs
pH	approx. 11
Water damage resistant	yes
Surface Tensile Bond Strength, 28 days (sanded, loaded surface)	> 1 MPa
Shrinkage	0.03–0.05 %

