

CM 8650 Light

LIGHTWEIGHT

MARINE ENVIRONMENT

FAST-DRYING

CM 8650 Light is primarily intended to be used where a quick-drying, lightweight alternative is needed.

June 27, 2019

Area of use

For use in homes, offices, public buildings and similar areas. CM 8650 Light is approved for use in marine environments. Suitable for stable substrates of concrete, ceramics, stone, steel, sheet metal or wood, where there is little risk of movement or deformation. Proper application thickness is 25-125 mm. Do not use product with under-floor heating due to its insulating properties. Minimum of 5 mm floor mortar is needed as underlay for carpeting. Reinforcement is needed for use on wood.

Pre-treatment

The substrate should be clean and free of dust, cement skin, grease and other impurities that can prevent adhesion. Adhesion and surface resistance of the substrate should be no less than 0.5 MPa. Always prime the substrate with PP 600 and apply wet-in-wet. In terms of the primer forming a film, the temperature of the substrate must not fall below 10°C. For best results, the ambient temperature in the work area should be between 10 and 25°C. In terms of the formation of cracks due to shrinkage or potential settling, do not cover a concrete structure earlier than one month after pouring the concrete. The guiding value of 90% RH during construction should be set as an upper limit during the application of the product.

Mixing

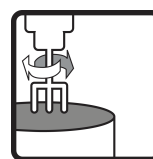
CM 8650 Light is mixed with a max. 3.2 liters of water per 12.5 kg bag. Mix with a drilling machine with a whisk, and whisk until it becomes a stiff, lump-free compound that can be shaped into a ball in your hand. If the screed has started to dry out, do not try to mix in more water, rather discard the screed.

Application

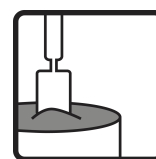
Spread the blended compound on the floor and compress and swipe with the straight edge of a lath to a thickness of min 25 mm. In wet rooms with an slope, set a lath along the wall and pull the mortar toward the floor drain. Always properly seal the drains to avoid clogging the drainage lines.



Water requirements
3,2 l/12,5 kg



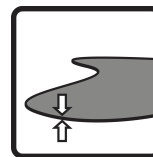
Mixing time
3 min



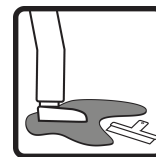
Working time
25 min



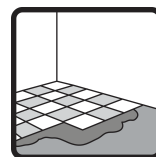
Workplace temperature
10–25 °C



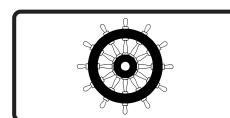
Thickness
25–125 mm



Final set
1.5–2 hrs



Coverable (tiles)
3–6 hrs



Combimix®

CM 8650 Light

LIGHTWEIGHT

MARINE ENVIRONMENT

FAST-DRYING

CM 8650 Light is primarily intended to be used where a quick-drying, lightweight alternative is needed.

June 27, 2019

Post-treatment and curing

The screeded, compressed surface can be floated immediately. Before the screed has managed to fully cure, smooth the surface with a trowel. Do not allow the material to dry too quickly and protect it from evaporation, high temperatures, drafts, etc. by placing a plastic cover over it. Final finish can be done as soon as the surface has dried. Always make sure that the material is sufficiently dry before treating with a wet room membrane. On dry substrates, the curing time in order to apply the wet room membrane is 8-16 hours after leveling with CM 8650 Light. The drying time specified assumes a curing environment with approximately 20°C, 40% RH and proper air flow. The curing time for laying carpet depends on what type of top spackling is used.

This product sheet contains general information. Products can be used in a number of changing conditions and situations. Combimix is not responsible for the storage, use in construction, processing or design, interactions with other products, required use due to local conditions or other external factors. Combimix is also not responsible for cases where the above information has been misinterpreted or neglected by the user.

Storage time and packaging

Six months in dry areas. CM 8650 Light is delivered in 12.5 kg bags.

Residual products and safety information

Empty bags can be burned. Any remaining, dry powder that has been stored properly can be used again. Hardened material should be disposed of as construction waste. Do not wash the product into the sewage system. The cement in the product has a reduced level of chromate

Health, environment, safety and technical service documents

Current version of the datasheet, CE documents, building material declaration and safety data sheets are available at www.combimix.com. Previous undated or dated editions are not valid. For more information contact our sales organization.



CM 8650 Light

LIGHTWEIGHT

MARINE ENVIRONMENT

FAST-DRYING

CM 8650 Light is primarily intended to be used where a quick-drying, lightweight alternative is needed.

June 27, 2019

Produktspecifikation

Release of corrosive substances	CT (as per Marine directive 96/98/EC)
Compressive strength class	C5 (as per Marine directive 96/98/EC)
Compressive strength average	10 MPa (as per Marine directive 96/98/EC)
Flexural strength class	F2 (as per Marine directive 96/98/EC)
Flexural strength average	2,5 MPa (as per Marine directive 96/98/EC)
Fire resistance class	IMO FTPC Part 6 (IMO Res. A.687(17)), IMO FTPC Part2 (as per Marine directive 96/98/EC)
Adhesion to surface	> 0,6 MPa (as per Marine directive 96/98/EC)
Thickness	25–125 mm
Grain size	< 0.5 mm
Material consumption	0.65 kg/m ² /mm
Weight (dry state)	650 kg/m ³
Water requirements	3,2 l/12,5 kg
Workplace temperature	10–25 °C
Mixing time	3 min
Working time	25 min
Final set	1.5–2 hrs
Coverable (tiles)	3–6 hrs
Carpetable	8–16 hrs
pH	approx. 11
Water damage resistant	yes
Surface Tensile Bond Strength, 28 days (sanded, loaded surface)	> 1 MPa
Shrinkage	0.05 %
TVOC 28 days	> 10 µg/(m ² h)

