

CM 920 Design

INDUSTRY

PUMPABLE

CM 920 Design is a pigmented, pumpable self-levelling compound.

Area of use

The CM 920 Design is suitable for new construction and renovation. The product is intended for indoor use on concrete and other hard substrates. The product may be used as a wear surface in fx. domestic areas, offices spaces or shopping malls.

Pre-treatment

The substrate should be clean and free of dust, cement skin, grease and other impurities that can prevent adhesion. Adhesion and surface resistance of the substrate should be no less than 1.5 MPa. Always prime the underlying substrate with PP 600 and allow to dry before pouring. In terms of the primer forming a film and the curing of the self-levelling, the temperature of the substrate must not fall below 10 °C. For best results, the ambient temperature in the work area should be between 10 and 25 °C. At higher or lower temperatures, the time for curing will shorten or extend. With the risk for cracks due to shrinkage or settings in the subfloor, a concrete surface should not be leveled within the first 28 days after casting. As a recommendation the RH in the concrete should have reached RH 90 % as the upper limit for pouring the CM 920 Design. Use the Combimix form foam for edging. In order to avoid drainage pipes from getting clogged, always make sure the drains are properly sealed before pouring.

Mixing

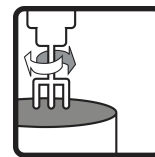
Mix the dry powder with 3.8–4.0 liters of water (19–20 %) per 20 kg bag. Mix with a drilling machine and a whisk, or a mixing pump intended for this purpose. Best results are achieved when mixing in a barrel. The correct water mixture can be tested using a slump test with a cylinder with Ø 30 mm and a height of 50 mm on a 300 x 300 mm plexiglas plate. With the correct water mixture, the spread should be max 140 mm. The slump test also checks that the material is well blended and that there is no separation.

Application

The mixed material is applied by hand, or pumped out onto the substrate in lengths. Each new ribbon is added to the old one as soon as possible so that the material can blend together and create an even



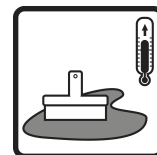
Water requirements
3.8–4.0 l/20 kg



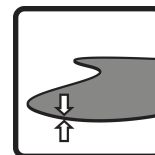
Mixing time
2+1 min



Working time
15–20 min



Workplace temperature
10–25 °C



Thickness
5–15 mm



Final set
approx. 2 hrs



December 20, 2024

CM 920 Design

INDUSTRY

PUMPABLE

CM 920 Design is a pigmented, pumpable self-levelling compound.

surface. The width of the ribbons can be adjusted to the capacity of the mixing pump and the thickness of the covering. The material requires a light treatment with a trowel to provide maximum smoothness.

Post-treatment and curing

You can easily shape or cut the semi-hardened self-leveling underlayment material before it fully dries. The product is paintable with epoxy or similar after 2–5 days depending on the thickness. Always make sure that the material is sufficiently dry before it gets overcoated. The guiding value assumes a curing temperature of approximately 20 °C, 50 % RH and proper air flow.

Storage time and packaging

Store in a dry environment, on an unopened plastic-coated pallet, six months from the date of production. The date of production is printed on the packaging. CM 920 Design is delivered in 20 kg bags.

Residual products and safety information

Empty bags can be burned. Any remaining, dry powder that has been stored properly can be used again. Hardened material should be disposed of as construction waste. Do not wash the product into the sewage system. Follow regulations in each respective country.

Health, environment, safety and technical service documents

For current version of product information, contact Combimix at info@combimix.se. Previously undated and dated issues are no longer valid. For more information contact our sales organization.

This product sheet contains general information. Products can be used in a number of changing conditions and situations. Combimix is not responsible for the storage, use in construction, processing or design, interactions with other products, required use due to local conditions or other external factors. Combimix is also not responsible for cases where the above information has been misinterpreted or neglected by the user.



December 20, 2024

CM 920 Design

INDUSTRY

PUMPABLE

CM 920 Design is a pigmented, pumpable self-levelling compound.

Produktspecifikation

Release of corrosive substances	CT (as per EN 13813)
Compressive strength class	C30 (as per EN 13813)
Compressive strength average	35 MPa (as per EN 13813)
Flexural strength class	F7 (as per EN 13813)
Flexural strength average	8 MPa (as per EN 13813)
Fire resistance class	A1fl (as per EN 13813)
RWA	20 (as per EN 13813)
Adhesion to surface	B1.5 (as per EN 13813)
Thickness	5–15 mm
Grain size	≤ 1 mm
Material consumption	1,7 kg/m ² /mm
Weight (dry state)	1700 kg/m ³
Water requirements	3.8–4.0 l/20 kg
Flow rate	140 mm
Workplace temperature	10–25 °C
Mixing time	2+1 min
Working time	15–20 min
Final set	approx. 2 hrs
Paintable with epoxi or similar	2–5 days
pH	approx. 11
Water damage resistant	yes
Shrinkage	≤ 0,03 %

