

FF 830

DUST-REDUCED

FINE

HAND APPLICATION

EASY TO USE

FAST-DRYING

FF 830 is a dust reduced, quick-drying finishing underlayment designed for skim-coating, smoothing and leveling prior to the application of floor coverings.

June 27, 2019

Area of use

The FF 830 is suited for new construction and renovations. The product is intended for indoor use on substrates of concrete, lightweight concrete, ceramic tiles, gypsum boards, wood and homogenous PVC. FF 830 is easy to use and yields a very smooth surface finish.

Pre-treatment

The substrate should be clean and free of dust, cement skin, grease or other impurities that can prevent adhesion. Adhesion and surface resistance of the substrate should be no less than 0.5 MPa. Weak and porous substrates should always be primed with PP 600 and allowed to dry before applying FF 830. In terms of the primer forming a film, the temperature of the substrate must not fall below 10 °C. For best results, the ambient temperature in the work area should be between 10 and 25 °C. At higher or lower temperatures, the time for curing will shorten or extend. With the risk for cracks due to shrinkage or settings in the subfloor, a concrete surface should not be leveled within the first 28 days after casting. As a recommendation the RH in the concrete should have reached RH 90 % as the upper limit for applying the FF 830.

Mixing

Mix the dry powder with max 1,8 liter water (max 40 %) per 4,5 kg bag or max 6 liter water (max 40 %) per 15 kg bag. Mix for 3 minutes with a drilling machine and a whisk to obtain a lump free mix. Product may be refreshed by re-mixing but do not add more water.

Application

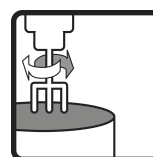
Apply the FF 830 to substrate with a steel trowel. After initial set, approx 10–15 min., remove any overlap marks, seams and inconsistencies by scraping with the steel trowel.

Post-treatment and curing

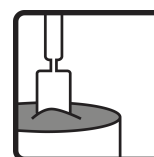
Protect FF 830 from excessive heat or draft conditions during the curing process. Protect for up to 24 hours after completed installation. FF 830 can be walked on after 30 minutes. Always make sure that the material is sufficiently dry before it will be covered by a carpet.



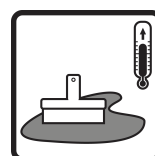
Water requirements
1,8 l/4,5 kg, 6 l/15 kg



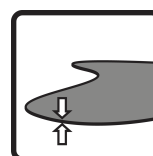
Mixing time
2+1 min



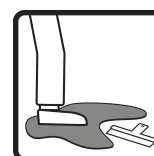
Working time
15–20 min



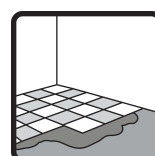
Workplace temperature
10–25 °C



Thickness
0–12 mm



Final set
30–60 min



Coverable (tiles)
1 hr



Combimix®

FF 830

DUST-REDUCED

FINE

HAND APPLICATION

EASY TO USE

FAST-DRYING

FF 830 is a dust reduced, quick-drying finishing underlayment designed for skim-coating, smoothing and leveling prior to the application of floor coverings.

June 27, 2019

The FF 830 may be covered by a carpet after 1–3 hours. The guiding value assumes a curing temperature of approximately 20 °C, 40 % RH and proper air flow.

Storage time and packaging

Store in a dry environment, on an unopened plastic-coated pallet, six months from the date of production. The date of production is printed on the packaging. FF 830 Final Finish is delivered in 4,5 kg bags and 15 kg bags.

Residual products and safety information

Empty bags can be burned. Any remaining, dry powder that has been stored properly can be used again. Hardened material should be disposed of as construction waste. Do not wash the product into the sewage system. The cement in the product has a reduced level of chromate. Follow regulations in each respective country.

Health, environment, safety and technical service documents

For current version of product information, contact Combimix at info@combimix.se. Previously undated and dated issues are no longer valid. For more information contact our sales organization.

This product sheet contains general information. Products can be used in a number of changing conditions and situations. Combimix is not responsible for the storage, use in construction, processing or design, interactions with other products, required use due to local conditions or other external factors. Combimix is also not responsible for cases where the above information has been misinterpreted or neglected by the user.



FF 830

DUST-REDUCED

FINE

HAND APPLICATION

EASY TO USE

FAST-DRYING

FF 830 is a dust reduced, quick-drying finishing underlayment designed for skim-coating, smoothing and leveling prior to the application of floor coverings.

June 27, 2019

Produktspecifikation

Release of corrosive substances	CT (as per EN 13813)
Compressive strength class	C12 (as per EN 13813)
Flexural strength class	F4 (as per EN 13813)
Fire resistance class	A1 (as per EN 13813)
Adhesion to surface	> 2 MPa (as per EN 13813)
Thickness	0–12 mm
Thickness	6–12 mm lightweight concrete
Grain size	< 70 µm
Material consumption	1.2 kg/m ² /mm
Weight (dry state)	1200 kg/m ³
Water requirements	1,8 l/4,5 kg, 6 l/15 kg
Workplace temperature	10–25 °C
Mixing time	2+1 min
Working time	15–20 min
Final set	30–60 min
Coverable (tiles)	1 hr
Carpetable	1–3 hrs
pH	approx. 11
Water damage resistant	Yes
Surface Tensile Bond Strength, 28 days (sanded, loaded surface)	> 1,5 MPa
Shrinkage	0,03–0,05 %
TVOC 28 days	< 10 µg/(m ² h)

